

Self-service Kiosk

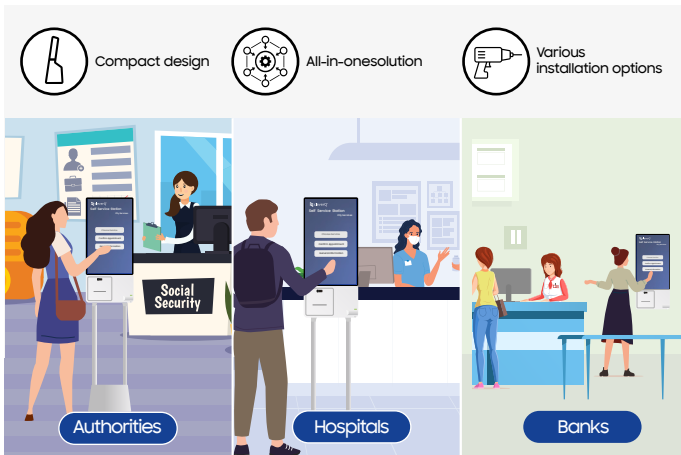
KMA series

Designed for every business, delivering peace of mind



Helpful kiosk displays are in demand as all industries evolve

Kiosks are increasingly becoming a part of everyday consumer life. Not only do kiosks provide an innovative way for businesses to renovate their environment and customer experience, but also to reallocate resources more efficiently and effectively, allowing staff to focus on other core competencies, such as handling customer requests. However, when selecting a kiosk, businesses must consider a variety of elements, including complexity of installation, reliability, maintenance and safety. Overall, kiosks are more important to the consumer journey than ever so businesses must have the right product, with the right features.



Seamless integration into any business environment

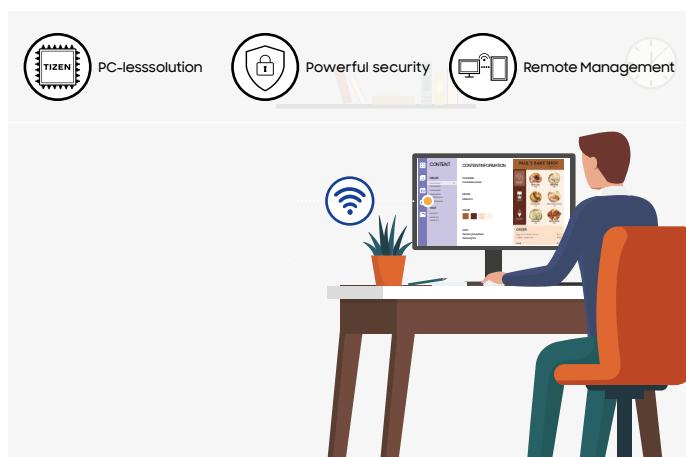
There are endless possibilities for the size and layout of any business environment, so business owners and managers need equipment that is tailored to their specific space and its requirements. In addition to ensuring that each kiosk fits seamlessly and harmoniously into the service area environment, it is also important to support a range of solutions and applications that are critical to the operation of any service or business. From multiple installation options to a modular design to a variety of payment methods and integrated features, the Samsung Kiosk can support the needs of any business without the need for additional equipment or peripherals - suitable for a range of environments, from service centers, government agencies, hospitals, theaters and retail stores.



Enhanced features for customer peace of mind

During a time when health and safety is front and center, ensuring that customers feel comfortable when using a kiosk is critical - and this demand from customers is going to continue to grow. In response to these trends, Samsung applied a UL-certified Antimicrobial Coating* to the Kiosk display, inhibiting microbial growth on the screen to help protect against certain bacteria, reducing customer concerns. In addition, a shatterproof film was applied over the display, enhancing customer safety by ensuring that glass doesn't spatter even if it's broken for maximum protection. All these intelligent features were developed with the same lifespan as the display itself, ensuring perfect visibility with no need for additional or new film to be applied to the screen in future.

*For further details regarding regional restrictions on the antibacterial function, please refer to each country's Samsung .com website.



Robust reliability and easy maintenance for enhanced efficiency

Businesses need to be confident they will experience powerful performance and low failure rates when selecting an automation solution such as a kiosk display. It is important to identify and select products from reliable manufacturers with deep expertise. Samsung delivers the performance needed, powered by the proven SoC-based Tizen operating system, which provides a PC-less solution for improved operation and reduced breakdowns. In addition, three-layered powerful data protection is built-in across the hardware, platform, and application, all secured by Samsung's Knox - enhancing payment security. With the right kiosk product, businesses can increase efficiency and ultimately, the speed and satisfaction of every customer interaction.

Key features



Modular functionality to support any payment type

The Samsung Kiosk adopts a modular design which provides a variety of payment options including credit card, barcode, QRcode and NFC, along with a built-in printer. This means it needs no additional peripherals for an advanced, all-in-one solution that also makes maintenance fast and easy.

*Samsung Kiosk supports a fully integrated EMV cradle for a Verifone terminal (P400) which varies by region and country.
*EMV terminal must be purchased separately.



Helpful, safe interactions

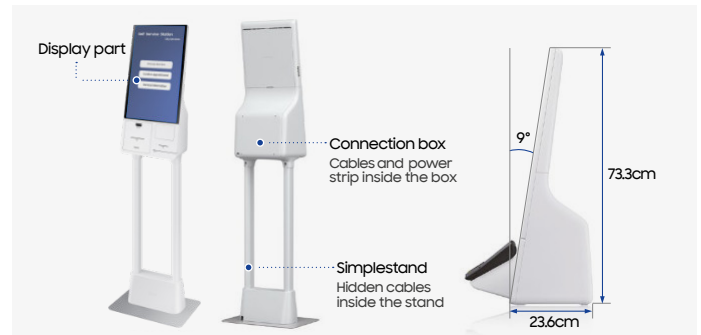
The next-generation kiosk inhibits microbial growth to help protect against certain bacteria with a zinc-based additive for customer interactions. So, customers can worry less about germs, and keep focus on what's on the screen. The shatterproof film over the display also enhances customer safety by ensuring that glass doesn't spatter even if it's broken.

*To perform its antibacterial function, this product has been treated with the bioactive substance Zinc Pyrithione.
*Antibacterial property does not protect users against bacteria and provides no protection against viruses including Covid-19.
*Antimicrobial Coating is on surface of screen only and the effect may vary depending on kind of bacteria or conditions of use.
*Antibacterial certification UL2282 which is granted when the antibacterial effectiveness is more than 99%.
(Test method: JIS Z 2801) after inoculation of 0.4cc of liquid with bacteria (Escherichia coli and Staphylococcus aureus) on specimen (5cmx5cm) a sterilized film (4cmx4cm) is adhered and left in a thermo-hygrometer with a relative humidity of 90% or more at 35°C for 24 hours.
on the antibacterial efficiency of the antibacterial function, please refer to each country's Samsung.com website.
*For further details regarding regional restrictions on the antibacterial function, please refer to each country's Samsung.com website.
*A shatter-proof film is applied to the screen to help mitigate the hazard of shattering glass, but it does not protect the screen from physical impact.



Powerful, protective security

The kiosk uses three-layer security protection powered by Samsung Knox technology which supports application development on the secured platform, the protection of important customer data and effective minimization of security attacks for a powerful, comprehensive security solution.



Compact and modern design

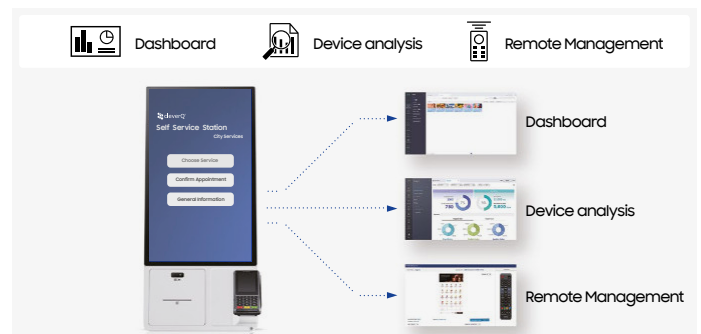
Samsung Kiosk is composed of a single display part and connection box, along with an optional stand. The design enables clean and convenient cable management while the grey-white color and simple stand means the kiosk blends perfectly into any store interior with a stylish look. Three installation types – countertop, floor stand and wall-mounting – also means the kiosk can be utilized in a range of business environments.

*Wall mount, connector box and floor stand must be purchased separately.



Powerful solution with no PC needed

Samsung Kiosk is built based on Samsung's proven SoC (System on Chip) technology. This enables the kiosk to function without the need for an external PC, further highlighting Samsung's leadership in the PC-less solution space, while delivering powerful and reliable technology.



Display monitoring and management

Samsung Kiosk provides a proven remote monitoring solution, allowing managers to view display information, check peripheral devices and resolve errors. Remote control capabilities also enable the diagnosis of issues and remote control of essential functions such as switching the screen on and off.

*Magician license must be purchased separately for use of management solution.
*Please refer to www.samsung.com/business or www.samsung.com/displaysolutions for system requirement of Magician.

Specifications

			Samsung Kiosk KMA Series
Panel	Diagonal Size		24"
	Resolution		FHD (1080 x 1920)
	Brightness(Typ.)		250cd (without glass)
	Contrast Ratio (Typ.)		1,000:1 (without glass)
	Viewing Angle (H/V)		178/178
	Response Time (G-to-G)		14ms (Typ.)
Touch	Type		Capative
Sound	Speaker Type		Built in speaker (5Wx1)
Features	Special	H/W	Antibacterial PEF film, Temperature sensor,WIFI module embedded,Clock battery (168hrs Clock Keeping), IP5x rating, 10 point touch
	Internal Player (Embedded H/W)	Processor	Cortex A72 1.7GHz Quad-Core CPU
		Main Memory Interface	LPDDR4 1.5GHz 64bit 3GB
		Storage	8GB (3.88GB Occupied by O/S, 4.12GB available)
		IO Ports	USB 2.0
		Operating System	Tizen 4.0 (VDLinux)
Connection Box Connectivity	Input	USB	USB x3
	Bi-direction		One connect port (44 Pin)
	External	Control	RS232Cx3, RJ45 x1 (Out, connected to EFT terminal)
Peripheral Devices	Receipt Printer	Type	Thermal
		Printing Speed	250mm/sec
		Cutting	Automatic (Support full cut, Partial cut)
		Paper Support	Support 80mm paper roll, 20 ~ 83mm paper width, 0.05 ~ 0.12mm paper thickness
	QR/Barcode Reader	Supported Dimension	1D, 2D
		Type	Support magnetic swipe and IC reader
	Card Reader (Korean only)	Authorization	Contacat EMV L1&L2 authorized
		Authorization	Korean credit finance certified (#SR-F10EH-S01F201)
Power	Power Supply		AC100 ~ 240V50/60Hz
	Power Consumption	Max [W/h]	49.5
		Typical [W/h]	25 (Display only)
		Stand-by [W/h]	0.5
	NFC		NFC Ready (Optional)
Mechanical Spec	Dimension (mm)	Set	334.4 (W) x 733 (H) x 236.5 (D) mm
	Weight (kg)	Set	12.5kg
	Color		Graywhite
	Protection Glass		Yes
	Stand		optional
	Power Cable Length		2.4m
Operation	Operating Temperature		0°C ~ 40°C
	Humidity		10 ~ 80%
Others	Optional	Stand	Floor stand
		Mount	VESA 200 x 200

			Floor stand
Mechanical Spec	Dimension (mm)	Set	450 (W) x 929.7 (H) x 324.3 (D) mm
		Package	389 (W) x 225 (H) x 1017 (D) mm
	Weight (kg)	Set	19.1kg
		Package	21.8kg
	Color		Graywhite

About Samsung Electronics Co., Ltd.

Samsung Electronics Co., Ltd. inspires the world and shapes the future with transformative ideas and technologies. The company is redefining the worlds of TVs, smartphones, wearable devices, tablets, cameras, digital appliances, medical equipment, network systems, and semiconductor and LED solutions. For the latest news, please visit the Samsung Newsroom at news.samsung.com.

Smart Signage

For more information about Samsung Smart Signage KM24A Displays, visit www.samsung.com/business or www.samsung.com/displaysolutions

Copyright © 2021 Samsung Electronics Co. Ltd. All rights reserved. Samsung is a registered trademark of Samsung Electronics Co. Ltd. Specifications and designs are subject to change without notice. Non-metric weights and measurements are approximate. All data were deemed correct at time of creation. Samsung is not liable for errors or omissions. All brand, product, service names and logos are trademarks and/or registered trademarks of their respective owners and are hereby recognized and acknowledged.

Samsung Electronics Co., Ltd.
416, Maetan 3-dong, Yeongtong-gu, Suwon-si, Gyeonggi-do 443-772, Korea